

# Deutsche Lufthansa AG

Deutsche Lufthansa AG's (Lufthansa) recent rating affirmation reflects its strong position in the global aviation industry as the largest European airlines group in terms of fleet and revenues. The group also benefits from its leading position in cargo and maintenance, repair and overhaul (MRO) that helps offset business cyclicalities. The rating considers the subdued profitability at Lufthansa Airlines as well as the group's moderate EBITDAR net leverage and strong liquidity.

The industrial action in 1H24, softer yields and delays in aircraft deliveries will drive net leverage higher in 2024, but it will remain within the rating sensitivities (1.8x vs. 2.5x). However, Fitch expects profitability to gradually improve thanks to the normalisation of operations after signing of the collective labour agreements (CLAs) and cost-cutting initiatives. This will lead to the group's credit metrics remaining commensurate with current rating sensitivities over the medium term.

## Key Rating Drivers

**Robust Business Profile:** Lufthansa has a worldwide leading market position, supported by a diverse multi-brand network and multi-hub strategy across major European cities. Its world-leading cargo and MRO segments provide significant synergies and help mitigate market cyclicalities. In particular, Lufthansa Technik (MRO) continues to benefit from delayed aircraft deliveries and ongoing problems with Pratt & Whitney's geared turbofan (P&W GTF) engines.

**Profit Hit in 2024:** Lufthansa Airlines' performance has been particularly hit in 2024 by the labour dispute (mostly in 1Q24), some weakness in yields (which may persist beyond this year) and operational inefficiencies due to delayed aircraft deliveries. This led the company to revise its 2024 EBIT guidance to EUR1.4 billion–EUR1.8 billion compared with EUR2.7 billion in 2023 and initial 2024 guidance of stable against 2023.

Our 2024 EBITDAR forecast is EUR3.7 billion (EUR4.6 billion in 2023), but we expect 2025 EBITDAR to partially recover, despite our assumption of slightly weaker yields in 2025 and unchanged fuel price expectations. The expected improvement will mostly come from the company's cost-cutting measures along with profit growth at Cargo and Technik. Historically weaker profitability for Lufthansa than its main peers has been sufficiently offset by a more conservative capital structure, in our view.

**Normalised Labour Relations:** Lufthansa's 1H24 performance was affected by a strike from various employee groups that had a negative impact on profit of EUR450 million. The company has now negotiated CLAs covering 42,000 employees across group airlines including pilots, cabin crew and ground operations unions. The CLA includes an average salary increase of around 16% in three stages and a ban on strikes until 2026. We view these CLA agreements as positive for the company as it increases visibility over the coming years and enhances planning.

**Temporary Leverage Spike:** The company's Fitch-adjusted EBITDAR gross and net leverage was comfortably within the sensitivity at end-2023 at 2.9x and 1.3x, respectively. However, the profit decline in 2024 will lead to EBITDAR gross leverage spiking at 3.7x, exceeding our negative sensitivity of 3.5x, while net leverage will remain comfortably within the sensitivity. We anticipate that EBITDAR gross leverage will return within the sensitivity in 2025, with net leverage in the range of 1.8–2.0x during 2024–2026 (vs. 2.5x threshold).

**Prudent Financial Policy:** Lufthansa is committed to maintaining its adjusted net debt (including net pension liability) to adjusted EBITDA (as reported by the company) ratio below 3.5x and in general to retaining its investment-grade rating. The management has successfully maintained this ratio well below the target, achieving 1.7x in 2023 and 1.9x by end-September 2024. The company's target leverage broadly translates into Fitch's negative sensitivity for EBITDAR net leverage for the 'BBB-' rating.

## Ratings

Long-Term IDR	BBB-
Senior Unsecured Debt – Long-Term Rating	BBB-
Subordinated Long-Term Rating	BB

## Outlook

Long-Term Foreign-Currency IDR	Stable
--------------------------------	--------

[Click here for the full list of ratings](#)

## ESG and Climate

Highest ESG Relevance Scores	
Environmental	3
Social	3
Governance	3
2035 Climate Vulnerability Signal:	45

## Applicable Criteria

- Sector Navigators – Addendum to the Corporate Rating Criteria (June 2024)
- Corporate Recovery Ratings and Instrument Ratings Criteria (August 2024)
- Corporate Hybrids Treatment and Notching Criteria (November 2020)
- Corporate Rating Criteria (November 2023)

## Related Research

- Global Corporates Macro and Sector Forecasts
- EMEA Airlines – Relative Credit Analysis (September 2024)
- EMEA Aviation Monitor – October 2024

## Analysts

- Pierre Gaillac  
+34 93 492 9520  
[pierre.gaillac@fitchratings.com](mailto:pierre.gaillac@fitchratings.com)
- Raman Singla  
+44 20 3530 1728  
[raman.singla@fitchratings.com](mailto:raman.singla@fitchratings.com)

**Wider Industry Risks Remain:** Our forecasts include conservative assumptions to account for risks related to operational constraints (delays in aircrafts deliveries and slower capacity uptick), demand fatigue and slightly increasing unit costs (driven largely by staff costs following signed CLAs, emission reduction costs and general inflation). Lufthansa is not meaningfully affected by the P&W GTF engine issues.

**Completion of ITA Acquisition:** In July 2024, the European Commission approved Lufthansa's acquisition of a 41% in ITA Airways (ITA). On 29 November 2024, the European Commission also approved a package of antitrust remedies, which should enable Lufthansa to start integrating the acquisition by early 2025. We believe that Lufthansa's market position could be mildly strengthened by the integration of ITA into its network and alliance, while operational synergies are possible.

Lufthansa has the option to proceed with a full takeover of ITA. However, the decision remains at Lufthansa's discretion and is contingent on ITA's performance. Our forecast assumes that Lufthansa will retain its 41% stake with no further share acquisitions before 2026 and few synergies over the forecast horizon.

## Financial Summary

(EURm)	2019	2022	2023	2024F	2025F	2026F
EBITDAR	4,381.0	3,509.0	4,644.0	3,702.5	4,298.1	4,789.7
EBITDAR margin (%)	12.0	10.7	13.1	9.4	10.2	10.9
FCF margin (%)	-2.8	4.4	-1.0	—	—	—
EBITDAR leverage (x)	2.1	4.2	2.9	3.7	3.5	3.4
EBITDAR net leverage (x)	1.4	1.9	1.3	1.9	1.9	2.1
EBITDAR fixed-charge coverage (x)	3.8	2.9	3.9	2.6	2.7	2.8

F = Forecast

Source: Fitch Ratings, Fitch Solutions

## Rating Derivation Relative to Peers

Lufthansa is the largest EMEA airlines group by fleet size and revenues and benefits from a strong position in cargo and MRO, mainly in Europe and North America. As a multi-brand group, Lufthansa compares well with International Consolidated Airlines Group S.A. (IAG) and Air France KLM (AFKLM; BBB-/Stable) due to its diversified hub structure and extensive route network.

Air France KLM is Lufthansa's closest peer due to their strong respective hub positions with geographic proximity. Both companies operate passenger, cargo and MRO businesses, but Lufthansa remains the leader in each. However, Air France KLM has reported a faster recovery from the pandemic, better profitability and higher geographic diversification globally. We view their business profiles as comparable.

British Airways Plc (BA; BBB-/Stable, Standalone Credit Profile (SCP) bb+) compares well with Lufthansa in terms of its strong hub position in Europe and diversified network. We view Lufthansa's overall business profile as stronger because of its larger size and better business mix. Along with Lufthansa's more robust financial profile, with lower leverage and higher liquidity, this leads to its IDR being one notch above BA's SCP.

Turk Hava Yollari Anonim Ortakligi (Turkish Airlines; BB-/Stable) also operates passenger, cargo and MRO businesses but remains a smaller player than the German airline. Lufthansa has a stronger business profile thanks to its more favourable geographic position with a better operating environment. Turkish Airlines is currently rated at the same level as Türkiye's Country Ceiling.

## Navigator Peer Comparison

	IDR/Outlook	Operating Environment	Management and Corporate Governance	Diversification	Market Position	Management Strategy/Effectiveness	Cost Position	Profitability	Financial Structure	Financial Flexibility
American Airlines Group, Inc.	B+/Stable	aa-	bbb+	bbb	bb+	bb	bb	bb-	b	bb-
British Airways Plc	BBB-/Stable	aa-	a	bbb	bbb-	bbb	bb+	bb+	bb	bbb-
Delta Air Lines, Inc.	BBB-/Stable	aa	a+	bbb	bb+	bbb-	bb	bb+	bbb-	bbb-
Deutsche Lufthansa AG	BBB-/Stable	aa-	a	bbb+	bbb-	bbb-	bb+	bb-	bbb-	bbb
Ryanair Holdings plc	BBB+/Stable	aa-	a-	bbb	bbb	bbb	bbb	bbb	bbb+	bbb+
Türk Hava Yolları Anonim Ortaklığı (Turkish Airlines)	BB-/Stable	bb	bbb	bbb-	bb+	bb+	bb+	bb	bb-	bb+
Wizz Air Holdings Plc	BB+/Stable	a-	bbb+	bbb-	bbb	bbb-	bbb	bbb-	bb	bb+

Source: Fitch Ratings.

Relative Importance of Factor: Higher (Red), Moderate (Blue), Lower (Light Blue)

Name	IDR/Outlook	Operating Environment	Management and Corporate Governance	Diversification	Market Position	Management Strategy/Effectiveness	Cost Position	Profitability	Financial Structure	Financial Flexibility
American Airlines Group, Inc.	B+/Stable	+12	+8	+7	+5	+4	+4	+3	+1	+3
British Airways Plc	BBB-/Stable	+6	+4	+1	0	+1	-1	-1	-2	0
Delta Air Lines, Inc.	BBB-/Stable	+7	+5	+1	-1	0	-2	-1	0	0
Deutsche Lufthansa AG	BBB-/Stable	+6	+4	+2	0	0	-1	-3	0	+1
Ryanair Holdings plc	BBB+/Stable	+4	+1	-1	-1	-1	-1	-1	0	0
Türk Hava Yolları Anonim Ortaklığı (Turkish Airlines)	BB-/Stable	+1	+4	+3	+2	+2	+2	+1	0	+2
Wizz Air Holdings Plc	BB+/Stable	+4	+3	+1	+2	+1	+2	+1	-1	0

Source: Fitch Ratings.

Factor Score Relative to IDR: Worse positioned than IDR (Red), Within one notch of IDR (Blue), Better positioned than IDR (Light Blue)

## Rating Sensitivities

### Factors that Could, Individually or Collectively, Lead to Positive Rating Action/Downgrade

- EBITDAR margin sustained above 15%
- EBITDAR net leverage below 1.5x and EBITDAR leverage below 2.5x, also backed by a financial policy commensurate with these ratios

### Factors that Could, Individually or Collectively, Lead to Negative Rating Action/Upgrade

- EBITDAR margin falling consistently below 11%
- EBITDAR net leverage above 2.5x and EBITDAR leverage above 3.5x
- EBITDAR fixed charge coverage sustainably below 2.8x
- Weaker than expected business recovery or aggressive external growth materially beyond our current expectations

## Liquidity and Debt Structure

**Ample Liquidity:** As of 30 September 2024, Lufthansa had EUR8 billion of Fitch-adjusted available liquidity, which included EUR1.4 billion of cash and equivalents and EUR6.6 billion of Fitch-adjusted securities. This is complemented by a EUR2.5 billion sustainability-linked revolving credit facility signed in February 2024 for a five-year tenor with two one-year extension options. Available liquidity is sufficient to cover short-term debt repayment and Fitch-expected moderately negative free cash flow. Lufthansa has a prudent liquidity policy that aims to maintain between EUR8 billion to EUR10 billion of liquidity.

## ESG Considerations

The highest level of ESG credit relevance is a score of '3', unless otherwise disclosed in this section. A score of '3' means ESG issues are credit neutral or have only a minimal credit impact on the entity, either due to their nature or the way in which they are being managed by the entity. Fitch's ESG Relevance Scores are not inputs in the rating process; they are an observation on the relevance and materiality of ESG factors in the rating decision. For more information on Fitch's ESG Relevance Scores, visit <https://www.fitchratings.com/topics/esg/products#esg-relevance-scores>.

## Climate Vulnerability Considerations

Fitch uses Climate Vulnerability Signals (Climate.VS) as a screening tool to identify sectors and Fitch-rated issuers that are potentially most exposed to credit-relevant climate transition risks and, therefore, require additional consideration of these risks in rating reviews. Climate.VS range from 0 (lowest risk) to 100 (highest risk). For more information on Climate.VS, see Fitch's [Corporate Rating Criteria](#).

Climate.VS can range from 0 (lowest risk) to 100 (highest risk). For further information on how Fitch perceives climate-related risks in the Transportation sector see our [Transportation–Climate Vulnerability Signals Update](#) report.

The FY23 revenue-weighted Climate Vulnerability Signals (Climate.VS) for Lufthansa for 2035 is 45 out of 100, suggesting elevated exposure to climate-related risks in that year. This is in line with other airlines, and reflects the gradually growing costs linked to the decarbonisation of the sector. At the moment, climate transition risks do not have a material influence on airline ratings including Lufthansa's, because the potentially disruptive changes due to transition are unlikely to materialise in the next eight to 10 years. Incremental costs such as carbon offsetting (EU Emissions Trading System) and Sustainable Aviation Fuel (SAF) usage are applicable to Lufthansa's peer group as well, and are included in our forecasts.

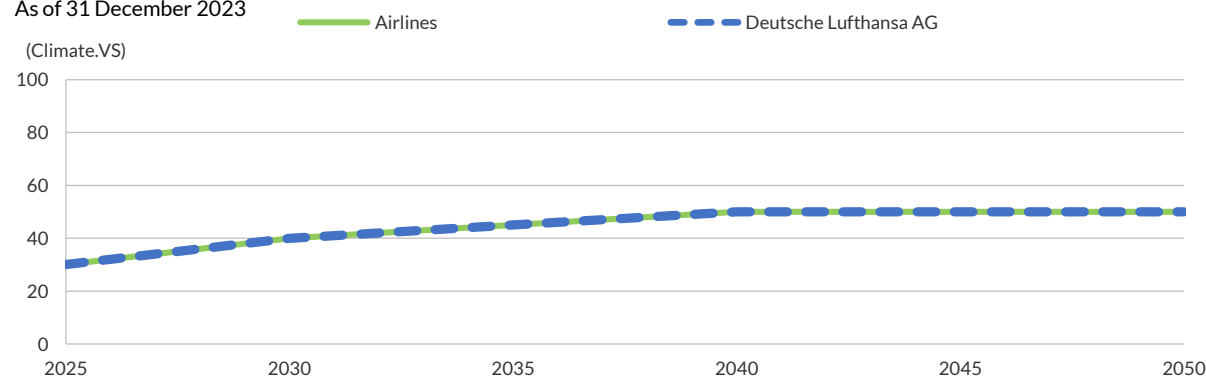
Lufthansa has committed to halve its net carbon emission by 2030 compared to 2019 and achieving a neutral CO<sub>2</sub> balance by 2050. Lufthansa aims to reach its 2030 target thanks to a mix of carbon reduction (through fleet renewal, SAF and operational efficiency totalling about one-third of this target) and compensation (Carbon Offsetting and Reduction Scheme for International Aviation (CORSIA) and voluntary compensation, together contributing two-thirds).

Lufthansa is gradually increasing its share of Sustainable Aviation Fuel (SAF) in its fuel mix in accordance with the EU regulation. Additionally, the company works with partners to develop the SAF availability and develops commercial agreement to ensure the supply on the long-term.

We view the company's 2030 target as achievable, although subject to aircraft deliveries remaining on target over this period and CORSIA implementation. Lufthansa's 2050 target achievement will depend upon alternate propulsion technologies which are still under development.

### Climate.VS Evolution

As of 31 December 2023



Source: Fitch Ratings

## Liquidity and Debt Maturities

(EURm)	2024F	2025F	2026F
<b>Available liquidity</b>			
Beginning cash balance	7,225	7,143	5,093
Rating case FCF after acquisitions and divestitures	-82	-700	-1,272
Debt issued since last balance sheet	1,750	—	—
<b>Total available liquidity (A)</b>	<b>8,893</b>	<b>6,443</b>	<b>3,821</b>
<b>Liquidity uses</b>			
Debt maturities	-1,750	-1,350	-1,500
<b>Total liquidity uses (B)</b>	<b>-1,750</b>	<b>-1,350</b>	<b>-1,500</b>
<b>Liquidity calculation</b>			
Ending cash balance (A+B)	7,143	5,093	2,321
Revolver availability	2,500	2,500	2,500
<b>Ending liquidity</b>	<b>9,643</b>	<b>7,593</b>	<b>4,821</b>
Liquidity score (x)	5.5	6.6	4.2

F – Forecast.

Source: Fitch Ratings, Fitch Solutions, Deutsche Lufthansa AG

(EURm)	End 2023
2024	-1,750
2025	-1,350
2026	-1,500
Thereafter	-3,020
<b>Total</b>	<b>-7,620</b>

Source: Fitch Ratings, Fitch Solutions, Deutsche Lufthansa AG

## Key Assumptions

- Annual group network and Eurowings capacity down 8% in 2024 compared with 2019 (2023: -16% versus 2019), close to full recovery in 2025 and above 4% in 2026
- Load factor on average at 83% for 2024–2026
- Oil price of USD85/bbl in 2024–2026
- Cargo EBITDA increasing sequentially from 2023 with mid-teens EBITDAR margins
- MRO (Technik) EBITDAR stronger than historically, growing to around EUR1 billion by 2025
- Capex totalling about EUR11 billion during 2024–2026, or EUR3.6 billion on average a year
- Acquisition of 41% of ITA for EUR325 million by the beginning of 2025, without a further stake increase until 2027
- Dividends pay out of 25% of net income for a total of EUR0.9 billion for 2024–2026
- EUR0.5 billion of hybrid debt with 50% equity credit remaining in place

## Financial Data

(EURm)	2019	2022	2023	2024F	2025F	2026F
<b>Summary income statement</b>						
Gross revenue	36,424	32,770	35,442	39,478	42,004	43,770
Revenue growth (%)	1.6	94.9	8.2	11.4	6.4	4.2
EBITDA before income from associates	3,143	2,426	3,723	2,540	2,979	3,395
EBITDA margin (%)	8.6	7.4	10.5	6.4	7.1	7.8
EBITDA after associates and minorities	3,353	2,488	3,805	2,622	3,061	3,477
EBITDAR	4,381	3,509	4,644	3,703	4,298	4,790
EBITDAR margin (%)	12.0	10.7	13.1	9.4	10.2	10.9
EBIT	1,494	1,016	2,252	890	1,365	1,470
EBIT margin (%)	4.1	3.1	6.4	2.3	3.2	3.4
Gross interest expense	-199	-272	-398	-311	-317	-332
Pretax income including associate income/loss	1,860	1,050	2,317	950	1,409	1,503
<b>Summary balance sheet</b>						
Readily available cash and equivalents	3,188	8,070	7,501	7,143	6,793	6,320
Debt	3,387	8,113	7,373	7,373	7,723	8,523
Net debt	199	43	-128	230	930	2,203
Lease-adjusted debt	9,825	14,964	13,743	14,151	15,323	16,557
<b>Summary cash flow statement</b>						
EBITDA	3,143	2,426	3,723	2,540	2,979	3,395
Cash interest paid	17	-163	-305	-311	-317	-332
Cash tax	-1,009	-288	-92	-223	-330	-352
Dividends received less dividends paid to minorities (inflow/outflow)	210	62	82	82	82	82
Other items before FFO	168	253	-89	-461	349	263
FFO	2,599	2,327	3,485	1,794	2,904	3,175
FFO margin (%)	7.1	7.1	9.8	4.5	6.9	7.3
Change in working capital	490	1,633	231	733	552	536
CFO (Fitch-defined)	3,089	3,960	3,716	2,526	3,456	3,712
Total non-operating/nonrecurring cash flow	—	—	—	—	—	—
Capex	-3,717	-2,508	-4,082	—	—	—
Capital intensity (capex/revenue) (%)	10.2	7.7	11.5	—	—	—
Common dividends	-381	—	—	—	—	—
FCF	-1,009	1,452	-366	—	—	—
FCF margin (%)	-2.8	4.4	-1.0	—	—	—
Net acquisitions and divestitures	25	108	—	—	—	—
Other investing and financing cash flow items	518	-262	1,673	—	—	—
Net debt proceeds	430	-1,817	-1,490	—	350	800
Net equity proceeds	—	—	—	—	—	—
Total change in cash	-36	-519	-183	-82	-350	-473
<b>Calculations for forecast publication</b>						
Capex, dividends, acquisitions and other items before FCF	-4,073	-2,400	-4,082	-2,573	-4,102	-4,895
FCF after acquisitions and divestitures	-984	1,560	-366	-47	-646	-1,183
FCF margin after net acquisitions (%)	-2.7	4.8	-1.0	-0.1	-1.5	-2.7
<b>Gross leverage ratios (x)</b>						
EBITDA leverage	1.0	3.3	1.9	2.8	2.5	2.5
EBITDAR leverage	2.1	4.2	2.9	3.7	3.5	3.4
CFO-capex/debt	-18.5	17.9	-5.0	-1.6	-0.7	-10.5

(EURm)	2019	2022	2023	2024F	2025F	2026F
<b>Net leverage ratios (x)</b>						
EBITDA net leverage	0.1	0.0	-0.0	0.1	0.3	0.6
EBITDAR net leverage	1.4	1.9	1.3	1.9	1.9	2.1
CFO-capex/net debt	-315.6	3,376.7	286.2	-52.5	-5.5	-40.7
<b>Coverage ratios (x)</b>						
EBITDA interest coverage	-197.2	15.3	12.5	8.4	9.6	10.5
EBITDAR fixed-charge coverage	3.8	2.9	3.9	2.6	2.7	2.8
EBITDAR net fixed-charge coverage	4.0	3.0	4.5	2.9	2.9	3.0

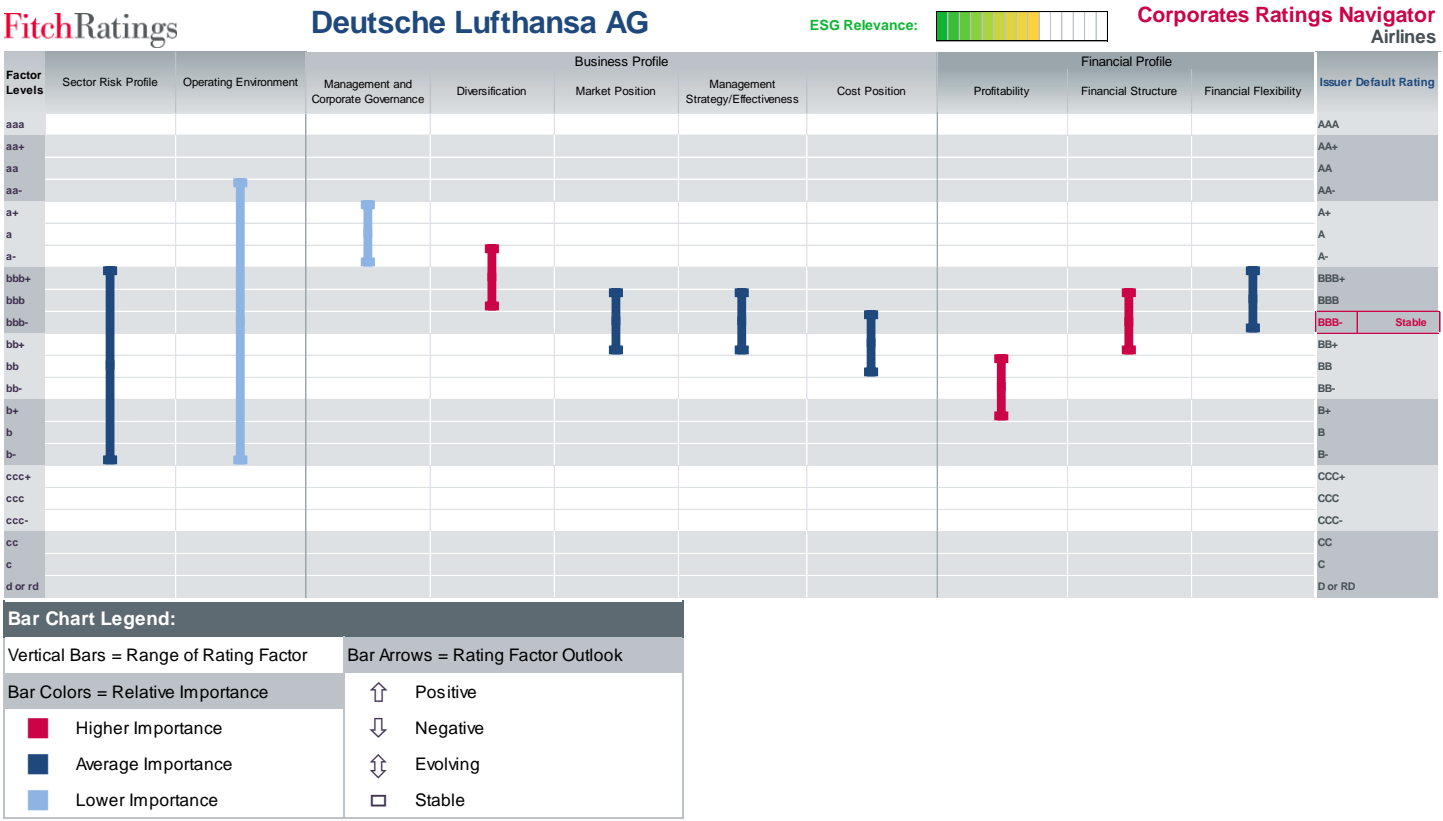
CFO – Cash flow from operations

Source: Fitch Ratings, Fitch Solutions, Deutsche Lufthansa AG

#### How to Interpret the Forecast Presented

The forecast presented above is based on Fitch Ratings' internally produced, conservative rating case forecast. It does not represent the forecast of the rated issuer. The forecast set out above is only one component used by Fitch Ratings to assign a rating or determine a rating outlook, and the information in the forecast reflects material but not exhaustive elements of Fitch Ratings' rating assumptions for the issuer's financial performance. As such, it cannot be used to establish a rating, and it should not be relied on for that purpose. Fitch Ratings' forecasts are constructed using a proprietary internal forecasting tool, which employs Fitch Ratings' own assumptions on operating and financial performance that may not reflect the assumptions that you would make. Fitch Ratings' own definitions of financial terms such as EBITDA, debt or free cash flow may differ from your own such definitions. Fitch Ratings may be granted access, from time to time, to confidential information on certain elements of the issuer's forward planning. Certain elements of such information may be omitted from this forecast, even where they are included in Fitch Ratings' own internal deliberations, where Fitch Ratings, at its sole discretion, considers the data may be potentially sensitive in a commercial, legal or regulatory context. The forecast (as with the entirety of this report) is produced strictly subject to the disclaimers set out at the end of this report. Fitch Ratings may update the forecast in future reports but assumes no responsibility to do so. Original financial statement data for historical periods is processed by Fitch Solutions on behalf of Fitch Ratings. Key financial adjustments and all financial forecasts credited to Fitch Ratings are generated by rating agency staff.

Ratings Navigator





#### Operating Environment

aa	Economic Environment	a	Strong combination of countries where economic value is created and where assets are located.
aa-	Financial Access	aa	Very strong combination of issuer specific funding characteristics and of the strength of the relevant local financial market.
	Systemic Governance	aa	Systemic governance (eg rule of law, corruption; government effectiveness) of the issuer's country of incorporation consistent with 'aa'.
b-			
ccc+			

#### Management and Corporate Governance

aa-	Management Strategy	a	Coherent strategy and good track record in implementation.
a+	Governance Structure	a	Experienced board exercising effective check and balances. Ownership can be concentrated among several shareholders.
a	Group Structure	a	Group structure shows some complexity but mitigated by transparent reporting.
a-	Financial Transparency	a	High quality and timely financial reporting.
bbb+			

#### Diversification

a	Network Diversity	bbb	Extensively diversified domestic and international network. History of successful network enhancement through joint ventures or partnerships.
a-	Hub Structure	bbb	Strong/rationalized hub structure. Hubs (or bases for point-to-point carriers) are profitable/located in strategic markets.
bbb+			
bbb			
bbb-			

#### Market Position

bbb+	Position in Key Markets	bbb	Strong/leading positions in key, cash flow generative and/or protected markets (reflected in market share and/or PRASK advantage over peers).
bbb	Cost Leadership	bb	Low cost carrier leader in some markets.
bbb-			
bb+			
bb			

#### Management Strategy/Effectiveness

bbb+	Fleet Strategy	bb	Adequate fleet management. Mostly efficient/young aircraft, some obsolete/inefficient models, heavy upcoming deliveries.
bbb	Fuel Hedging	bbb	Consistently employs effective strategies to mitigate fuel price risk (i.e. hedging, maintaining solid liquidity, fuel-efficient fleet).
bbb-	Growth Strategy	bbb	Conservative and/or sound growth strategy.
bb+			
bb			

#### Cost Position

bbb	Cost Structure	bb	Moderate fixed-cost structure. CASM in line with peers.
bbb-	Cost Flexibility	bb	Limited ability to quickly reduce costs, or cost flexibility generally in line with peers.
bb+	Pensions	b	Sizeable/inflexible defined benefit obligations.
bb	Labor Relations	bb	Unionized and/or inflexible work rules, constructive relationship with labor groups.
bb-			

#### Profitability

bb+	EBITDAR Margin	b	10%
bb	EBIT Margin	b	7%
bb-	FCF Margin	bbb	Positive across the cycle.
b+	Volatility of Profitability	bbb	Volatility of profits in line with industry average.
b			

#### Financial Structure

bbb+	EBITDAR Leverage	bbb	2.3x
bbb			
bbb-			
bb+			
bb			

#### Financial Flexibility

a-	Financial Discipline	a	Clear commitment to maintain a conservative policy with only modest deviations allowed.
bbb+	Liquidity as % of LTM Revenue	bbb	20%
bbb	EBITDAR Fixed Charge Coverage	bb	3.0x
bbb-	FX Exposure	bb	FX exposure on profitability and/or debt/cash flow match. Some hedging in place but only partly effective.
bb+	Capital Market Access; Unencumbered Asset Base	bbb	Demonstrated access to capital markets and/or sizable unencumbered asset base.

**How to Read This Page:** The left column shows the three-notch band assessment for the overall Factor, illustrated by a bar. The right column breaks down the Factor into Sub-Factors, with a description appropriate for each Sub-Factor and its corresponding category.

#### Credit-Relevant ESG Derivation

				Overall ESG	
Deutsche Lufthansa AG has 10 ESG potential rating drivers				key driver	0 issues
➡	Emissions and noise pollution	driver	0 issues	5	
➡	Fuel use in operations	potential driver	10 issues	4	
➡	Extreme weather conditions (e.g. hurricanes, volcanoes) on operations	not a rating driver	0 issues	3	
➡	Data security; safety regulations			2	
➡	Impact of labor negotiations and employee (dis)satisfaction; workforce diversity			1	
➡	Worker safety and accident prevention; prescriptive working conditions				
Showing top 6 issues					

## Credit-Relevant ESG Derivation

Deutsche Lufthansa AG has 10 ESG potential rating drivers

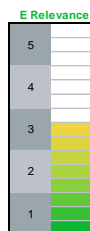
- ➔ Deutsche Lufthansa AG has exposure to emissions regulatory risk but this has very low impact on the rating.
- ➔ Deutsche Lufthansa AG has exposure to energy productivity risk but this has very low impact on the rating.
- ➔ Deutsche Lufthansa AG has exposure to extreme weather events but this has very low impact on the rating.
- ➔ Deutsche Lufthansa AG has exposure to customer accountability risk but this has very low impact on the rating.
- ➔ Deutsche Lufthansa AG has exposure to labor relations & practices risk but this has very low impact on the rating.
- ➔ Deutsche Lufthansa AG has exposure to employee health & safety risk but this has very low impact on the rating.

Showing top 6 issues

ESG Relevance to Credit Rating			
key driver	0	issues	5
driver	0	issues	4
potential driver	10	issues	3
not a rating driver	0	issues	2
	4	issues	1

## Environmental (E) Relevance Scores

General Issues	E Score	Sector-Specific Issues	Reference
GHG Emissions & Air Quality	3	Emissions and noise pollution	Management Strategy/Effectiveness
Energy Management	3	Fuel use in operations	Management Strategy/Effectiveness; Cost Structure; Profitability; Financial Flexibility
Water & Wastewater Management	1	n.a.	n.a.
Waste & Hazardous Materials Management; Ecological Impacts	1	n.a.	n.a.
Exposure to Environmental Impacts	3	Extreme weather conditions (e.g. hurricanes, volcanoes) on operations	Financial Flexibility



## How to Read This Page

ESG relevance scores range from 1 to 5 based on a 15-level color gradation. Red (5) is most relevant to the credit rating and green (1) is least relevant.

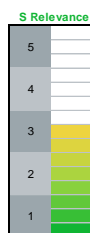
The **Environmental (E)**, **Social (S)** and **Governance (G)** tables break out the ESG general issues and the sector-specific issues that are most relevant to each industry group. Relevance scores are assigned to each sector-specific issue, signaling the credit-relevance of the sector-specific issues to the issuer's overall credit rating. The Criteria Reference column highlights the factor(s) within which the corresponding ESG issues are captured in Fitch's credit analysis. The vertical color bars are visualizations of the frequency of occurrence of the highest constituent relevance scores. They do not represent an aggregate of the relevance scores or aggregate ESG credit relevance.

The **Credit-Relevant ESG Derivation** table's far right column is a visualization of the frequency of occurrence of the highest ESG relevance scores across the combined E, S and G categories. The three columns to the left of ESG Relevance to Credit Rating summarize rating relevance and impact to credit from ESG issues. The box on the far left identifies any ESG Relevance Sub-factor issues that are drivers or potential drivers of the issuer's credit rating (corresponding with scores of 3, 4 or 5) and provides a brief explanation for the relevance score. All scores of '4' and '5' are assumed to reflect a negative impact unless indicated with a '+' sign for positive impact.

**Classification** of ESG issues has been developed from Fitch's sector ratings criteria. The General Issues and Sector-Specific Issues draw on the classification standards published by the United Nations Principles for Responsible Investing (PRI), the Sustainability Accounting Standards Board (SASB), and the World Bank.

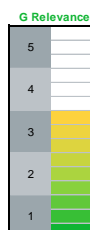
## Social (S) Relevance Scores

General Issues	S Score	Sector-Specific Issues	Reference
Human Rights, Community Relations, Access & Affordability	1	n.a.	n.a.
Customer Welfare - Fair Messaging, Privacy & Data Security	3	Data security; safety regulations	Management Strategy/Effectiveness; Market Position; Profitability; Financial Flexibility
Labor Relations & Practices	3	Impact of labor negotiations and employee (dis)satisfaction; workforce diversity	Management and Corporate Governance; Cost Structure; Profitability; Financial Structure
Employee Wellbeing	3	Worker safety and accident prevention; prescriptive working conditions	Management and Corporate Governance; Cost Structure; Profitability; Financial Structure
Exposure to Social Impacts	1	n.a.	n.a.



## Governance (G) Relevance Scores

General Issues	G Score	Sector-Specific Issues	Reference
Management Strategy	3	Strategy development and implementation	Management and Corporate Governance
Governance Structure	3	Board independence and effectiveness; ownership concentration	Management and Corporate Governance
Group Structure	3	Complexity, transparency and related-party transactions	Management and Corporate Governance
Financial Transparency	3	Quality and timing of financial disclosure	Management and Corporate Governance

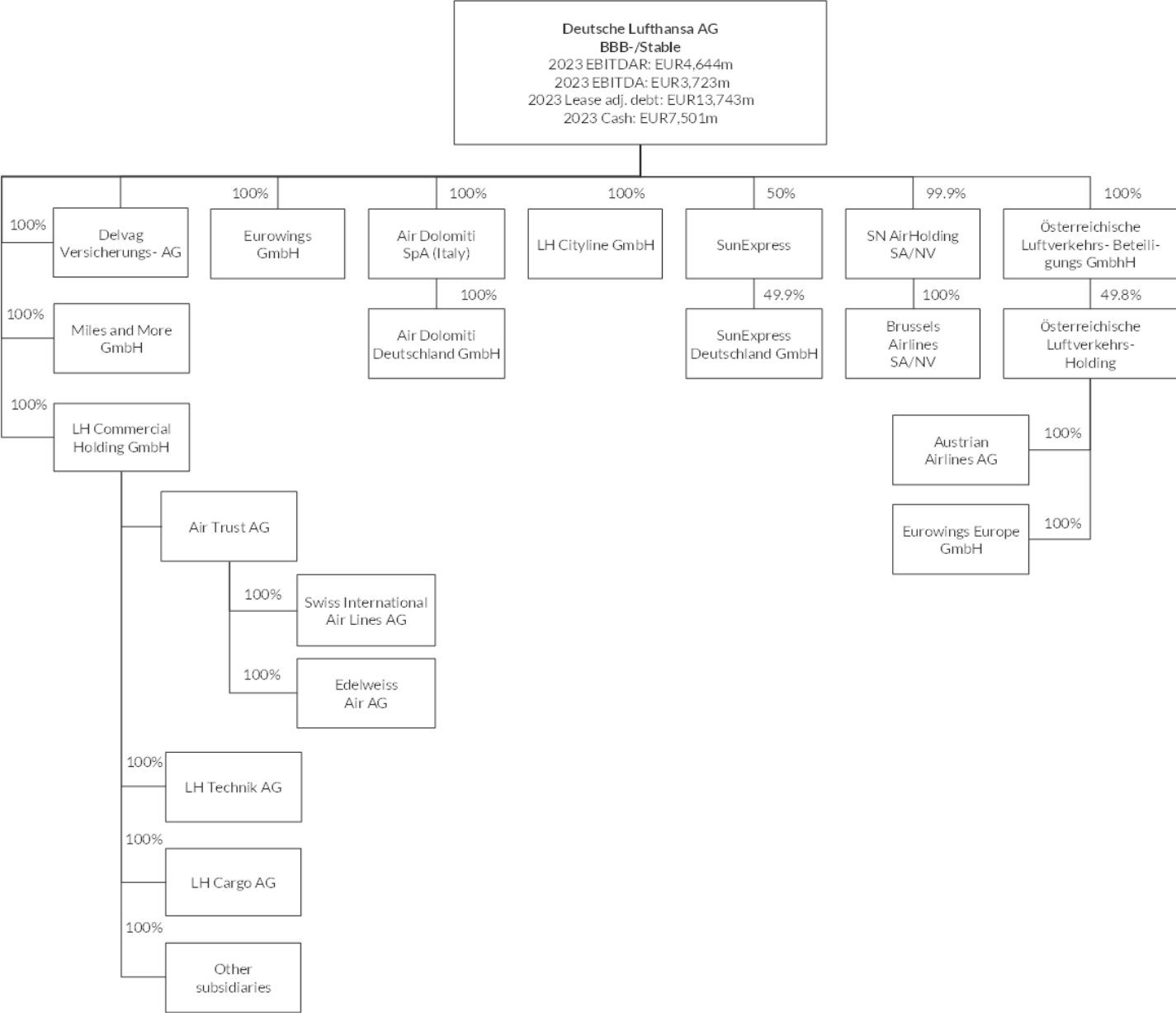


## CREDIT-RELEVANT ESG SCALE

## How relevant are E, S and G issues to the overall credit rating?

5	Highly relevant, a key rating driver that has a significant impact on the rating on an individual basis. Equivalent to "higher" relative importance within Navigator.
4	Relevant to rating, not a key rating driver but has an impact on the rating in combination with other factors. Equivalent to "moderate" relative importance within Navigator.
3	Minimally relevant to rating, either very low impact or actively managed in a way that results in no impact on the entity rating. Equivalent to "lower" relative importance within Navigator.
2	Irrelevant to the entity rating but relevant to the sector.
1	Irrelevant to the entity rating and irrelevant to the sector.

Simplified Group Structure Diagram



Note: Group structure is related to December 2024. Data are Fitch-adjusted and related to end-2023  
Source: Fitch Ratings, Fitch Solutions, Deutsche Lufthansa AG

## Peer Financial Summary

Company	Issuer Default Rating	Financial statement date	EBITDAR (EUR Millions)	EBITDAR margin (%)	FCF margin (%)	EBITDAR leverage (x)	EBITDAR net leverage (x)
Deutsche Lufthansa AG	BBB-						
	BBB-	2023	4,644.0	13	-1	2.9	1.3
		2022	3,509.0	11	5	4.2	1.9
		2019	4,381.0	12	-3	2.1	1.4
British Airways Plc	BBB-						
	BBB-	2023	2,829.0	17	-1	3.4	3.0
	BB	2022	1,590.8	13	-1	7.4	5.6
	BBB-	2019	3,535.6	23	-2	2.1	1.2
Turk Hava Yollari Anonim Ortakligi (Turkish Airlines)	BB-						
	B+	2023	4,628.5	24	14	2.8	1.7
	B	2022	4,440.3	26	20	3.0	2.0
		2019	2,133.7	18	-3	5.4	4.5
Ryanair Holdings plc	BBB+						
	BBB	2023	2,365.8	22	19	1.7	-0.2
	BBB	2022	379.8	8	17	13.4	3.9
	BBB+	2019	1,741.2	23	6	2.4	0.6
Wizz Air Holdings Plc	BB+						
	BBB-	2023	134.2	3	-8	39.6	28.3
	BBB-	2022	-19.0	-1	-24	-209.1	-143.6
	BBB	2019	720.0	31	12	3.2	1.4
Delta Air Lines, Inc.	BBB-						
	BB+	2023	8,812.5	17	2	3.0	2.6
	BB+	2022	6,208.5	13	-0	5.0	4.1
	BBB-	2019	9,102.7	22	5	1.7	1.4
American Airlines Group Inc.	B+						
	B+	2023	7,653.3	16	2	4.9	4.1
	B-	2022	5,796.9	13	-1	7.1	5.9
	BB-	2019	7,243.2	18	-2	4.1	3.7

Source: Fitch Ratings, Fitch Solutions

## Fitch Adjusted Financials

(EURm as of end-2023)	Standardised values	Cash adjustment	Lease treatment	Other adjustments	Adjusted values
<b>Income statement summary</b>					
Revenue	35,442	—	—	—	35,442
EBITDAR	4,848	—	-204	—	4,644
Lease expense for capitalised leased assets	—	—	-921	—	-921
EBITDA	4,848	—	-1,125	—	3,723
Depreciation and amortisation	-2,392	—	921	—	-1,471
EBIT	2,456	—	-204	—	2,252
<b>Balance sheet summary</b>					
Debt	13,696	—	-6,323	—	7,373
Of which other off-balance-sheet debt	—	—	—	—	—
Lease-equivalent debt	—	—	6,370	—	6,370
Lease-adjusted debt	13,696	—	47	—	13,743
Readily available cash and equivalents	8,266	-4	-761	-0	7,501
Not readily available cash and equivalents	—	—	—	—	—
<b>Cash flow summary</b>					
EBITDA	4,848	—	-1,125	—	3,723
Dividends received from associates less dividends paid to minorities	82	—	—	—	82
Interest paid	-509	—	204	—	-305
Interest received	166	—	—	—	166
Preferred dividends paid	—	—	—	—	—
Cash tax paid	-92	—	—	—	-92
Other items before FFO	-89	—	—	—	-89
FFO	4,406	—	-921	—	3,485
Change in working capital	278	—	—	-47	231
CFO	4,684	—	-921	-47	3,716
Non-operating/nonrecurring cash flow	—	—	—	—	—
Capex	-4,082	—	—	—	-4,082
Common dividends paid	—	—	—	—	—
FCF	602	—	-921	-47	-366
<b>Gross leverage (x)</b>					
EBITDAR leverage	2.8	—	—	—	2.9
(CFO-capex)/debt (%)	4.4	—	—	—	-5.0
<b>Net leverage (x)</b>					
EBITDAR net leverage	1.1	—	—	—	1.3
(CFO-capex)/net debt (%)	11.1	—	—	—	286.2
<b>Coverage (x)</b>					
EBITDAR fixed-charge coverage	9.7	—	—	—	3.9

CFO – Cash flow from operations

Notes: The standardised items presented above are based on Fitch's taxonomy for the given sector and region.

Reported items may not match the Fitch taxonomy, but they are captured into corresponding lines accordingly.

Debt includes other off-balance-sheet debt.

Source: Fitch Ratings, Fitch Solutions, Deutsche Lufthansa AG

## SOLICITATION & PARTICIPATION STATUS

For information on the solicitation status of the ratings included within this report, please refer to the solicitation status shown in the relevant entity's summary page of the Fitch Ratings website.

For information on the participation status in the rating process of an issuer listed in this report, please refer to the most recent rating action commentary for the relevant issuer, available on the Fitch Ratings website.

## DISCLAIMER & DISCLOSURES

All Fitch Ratings (Fitch) credit ratings are subject to certain limitations and disclaimers. Please read these limitations and disclaimers by following this link: <https://www.fitchratings.com/understandingcreditratings>. In addition, the following <https://www.fitchratings.com/rating-definitions-document> details Fitch's rating definitions for each rating scale and rating categories, including definitions relating to default. Published ratings, criteria, and methodologies are available from this site at all times. Fitch's code of conduct, confidentiality, conflicts of interest, affiliate firewall, compliance, and other relevant policies and procedures are also available from the Code of Conduct section of this site. Directors and shareholders' relevant interests are available at <https://www.fitchratings.com/site/regulatory>. Fitch may have provided another permissible or ancillary service to the rated entity or its related third parties. Details of permissible or ancillary service(s) for which the lead analyst is based in an ESMA- or FCA-registered Fitch Ratings company (or branch of such a company) can be found on the entity summary page for this issuer on the Fitch Ratings website.

In issuing and maintaining its ratings and in making other reports (including forecast information), Fitch relies on factual information it receives from issuers and underwriters and from other sources Fitch believes to be credible. Fitch conducts a reasonable investigation of the factual information relied upon by it in accordance with its ratings methodology, and obtains reasonable verification of that information from independent sources, to the extent such sources are available for a given security or in a given jurisdiction. The manner of Fitch's factual investigation and the scope of the third-party verification it obtains will vary depending on the nature of the rated security and its issuer, the requirements and practices in the jurisdiction in which the rated security is offered and sold and/or the issuer is located, the availability and nature of relevant public information, access to the management of the issuer and its advisers, the availability of pre-existing third-party verifications such as audit reports, agreed-upon procedures letters, appraisals, actuarial reports, engineering reports, legal opinions and other reports provided by third parties, the availability of independent and competent third-party verification sources with respect to the particular security or in the particular jurisdiction of the issuer, and a variety of other factors. Users of Fitch's ratings and reports should understand that neither an enhanced factual investigation nor any third-party verification can ensure that all of the information Fitch relies on in connection with a rating or a report will be accurate and complete. Ultimately, the issuer and its advisers are responsible for the accuracy of the information they provide to Fitch and to the market in offering documents and other reports. In issuing its ratings and its reports, Fitch must rely on the work of experts, including independent auditors with respect to financial statements and attorneys with respect to legal and tax matters. Further, ratings and forecasts of financial and other information are inherently forward-looking and embody assumptions and predictions about future events that by their nature cannot be verified as facts. As a result, despite any verification of current facts, ratings and forecasts can be affected by future events or conditions that were not anticipated at the time a rating or forecast was issued or affirmed. Fitch Ratings makes routine, commonly-accepted adjustments to reported financial data in accordance with the relevant criteria and/or industry standards to provide financial metric consistency for entities in the same sector or asset class.

The information in this report is provided "as is" without any representation or warranty of any kind, and Fitch does not represent or warrant that the report or any of its contents will meet any of the requirements of a recipient of the report. A Fitch rating is an opinion as to the creditworthiness of a security. This opinion and reports made by Fitch are based on established criteria and methodologies that Fitch is continuously evaluating and updating. Therefore, ratings and reports are the collective work product of Fitch and no individual, or group of individuals, is solely responsible for a rating or a report. The rating does not address the risk of loss due to risks other than credit risk, unless such risk is specifically mentioned. Fitch is not engaged in the offer or sale of any security. All Fitch reports have shared authorship. Individuals identified in a Fitch report were involved in, but are not solely responsible for, the opinions stated therein. The individuals are named for contact purposes only. A report providing a Fitch rating is neither a prospectus nor a substitute for the information assembled, verified and presented to investors by the issuer and its agents in connection with the sale of the securities. Ratings may be changed or withdrawn at any time for any reason in the sole discretion of Fitch. Fitch does not provide investment advice of any sort. Ratings are not a recommendation to buy, sell, or hold any security. Ratings do not comment on the adequacy of market price, the suitability of any security for a particular investor, or the tax-exempt nature or taxability of payments made in respect to any security. Fitch receives fees from issuers, insurers, guarantors, other obligors, and underwriters for rating securities. Such fees generally vary from US\$1,000 to US\$750,000 (or the applicable currency equivalent) per issue. In certain cases, Fitch will rate all or a number of issues issued by a particular issuer, or insured or guaranteed by a particular insurer or guarantor, for a single annual fee. Such fees are expected to vary from US\$10,000 to US\$1,500,000 (or the applicable currency equivalent). The assignment, publication, or dissemination of a rating by Fitch shall not constitute a consent by Fitch to use its name as an expert in connection with any registration statement filed under the United States securities laws, the Financial Services and Markets Act of 2000 of the United Kingdom, or the securities laws of any particular jurisdiction. Due to the relative efficiency of electronic publishing and distribution, Fitch research may be available to electronic subscribers up to three days earlier than to print subscribers.

For Australia, New Zealand, Taiwan and South Korea only: Fitch Australia Pty Ltd holds an Australian financial services license (AFS license no. 337123) which authorizes it to provide credit ratings to wholesale clients only. Credit ratings information published by Fitch is not intended to be used by persons who are retail clients within the meaning of the Corporations Act 2001.

Fitch Ratings, Inc. is registered with the U.S. Securities and Exchange Commission as a Nationally Recognized Statistical Rating Organization (the "NRSRO"). While certain of the NRSRO's credit rating subsidiaries are listed on Item 3 of Form NRSRO and as such are authorized to issue credit ratings on behalf of the NRSRO (see <https://www.fitchratings.com/site/regulatory>), other credit rating subsidiaries are not listed on Form NRSRO (the "non-NRSROs") and therefore credit ratings issued by those subsidiaries are not issued on behalf of the NRSRO. However, non-NRSRO personnel may participate in determining credit ratings issued by or on behalf of the NRSRO.

Copyright © 2024 by Fitch Ratings, Inc., Fitch Ratings Ltd. and its subsidiaries. 33 Whitehall Street, NY, NY 10004. Telephone: 1-800-753-4824, (212) 908-0500. Reproduction or retransmission in whole or in part is prohibited except by permission. All rights reserved.